

LM Intervention

BY

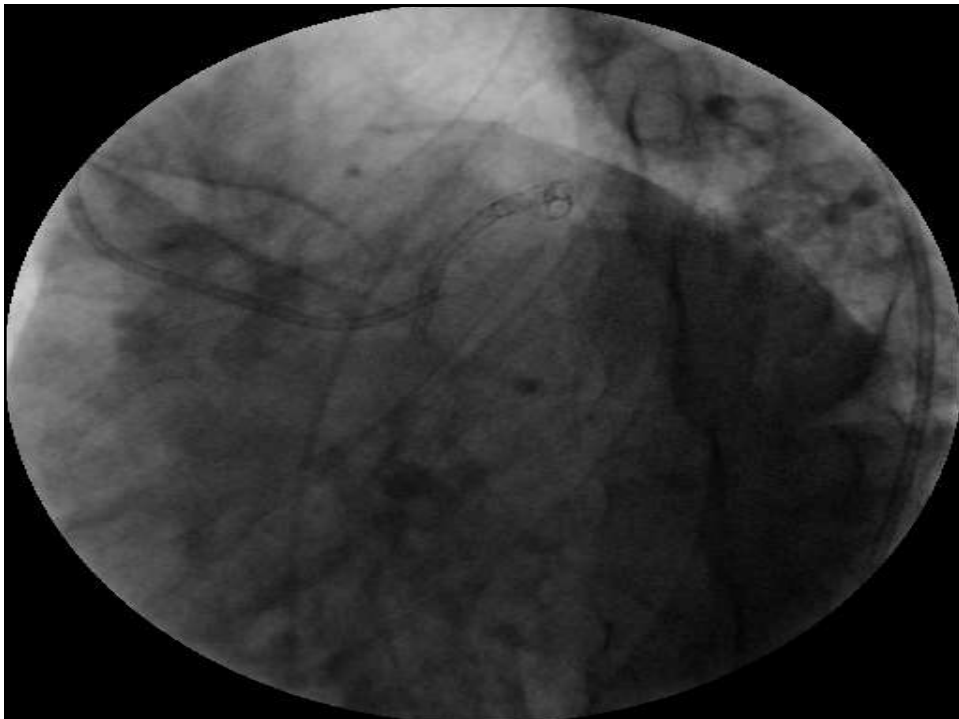
Hussam Bishr,MD

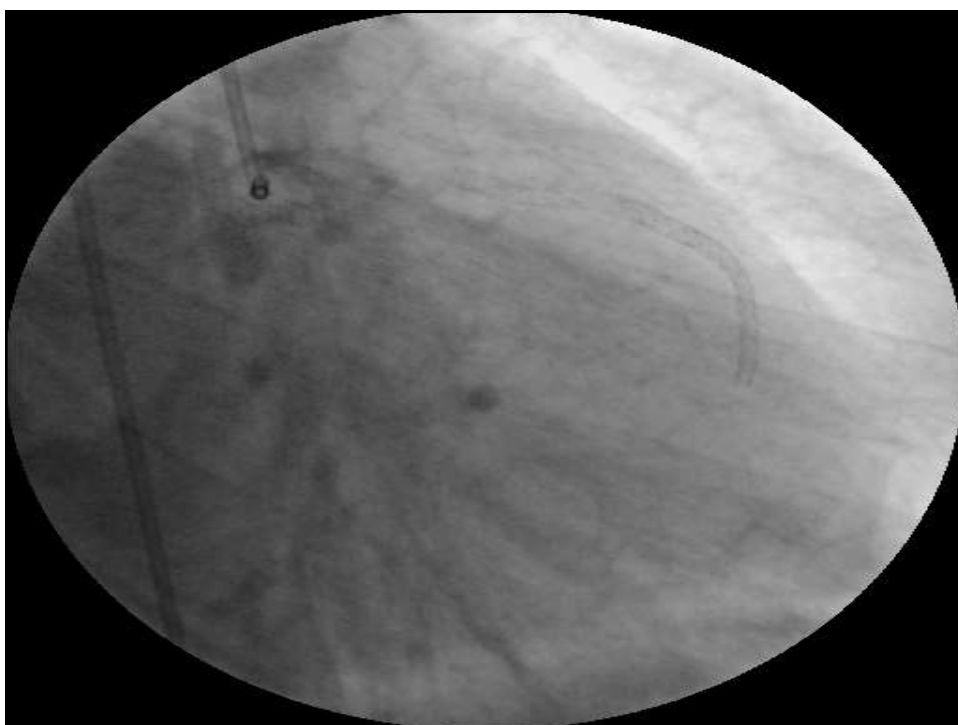
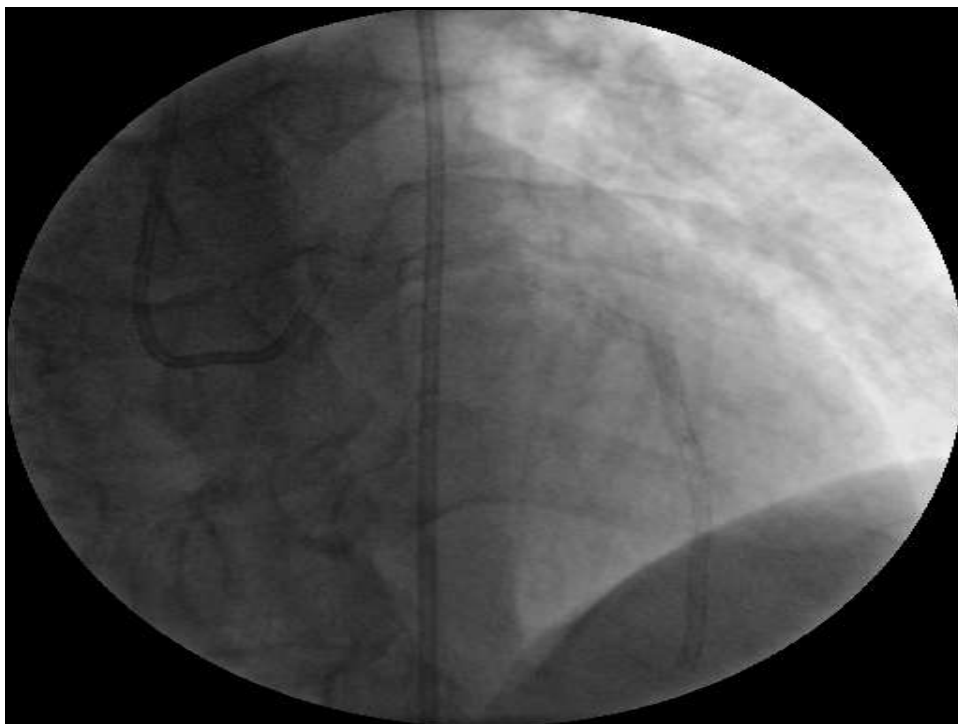
*Kobry Elkobaa Specialized Cardiac
Hospital*

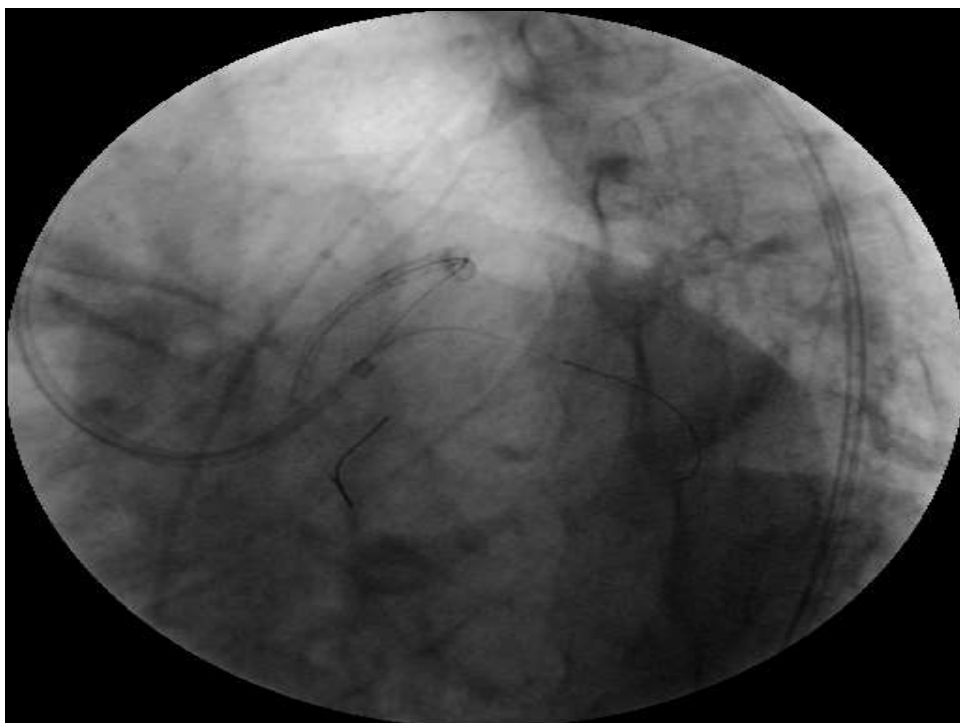
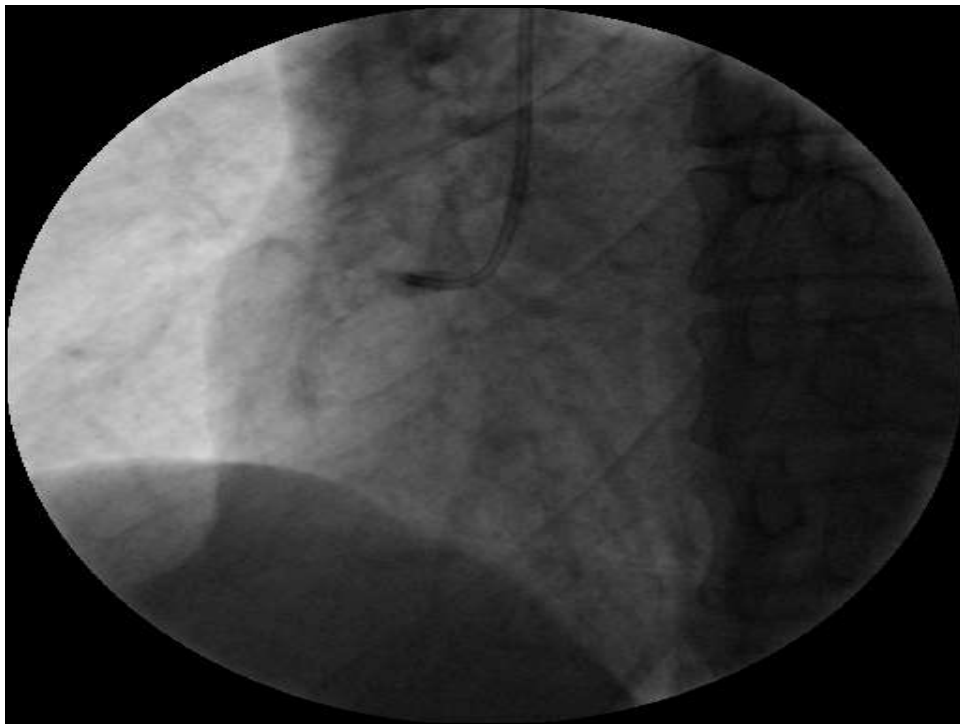
Clinical Presentation

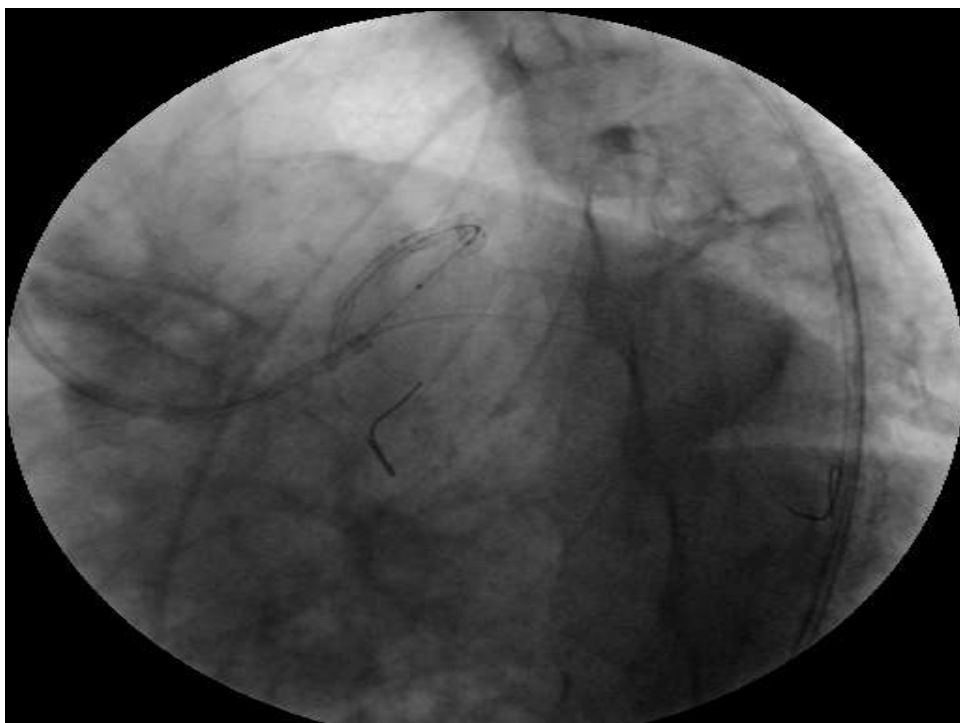
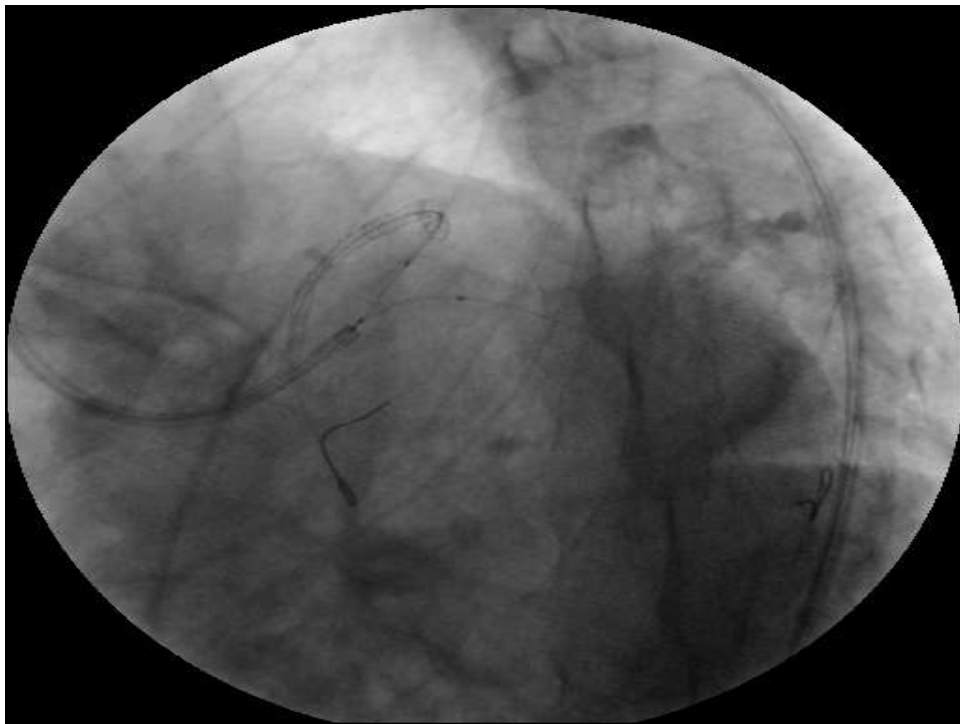
- So

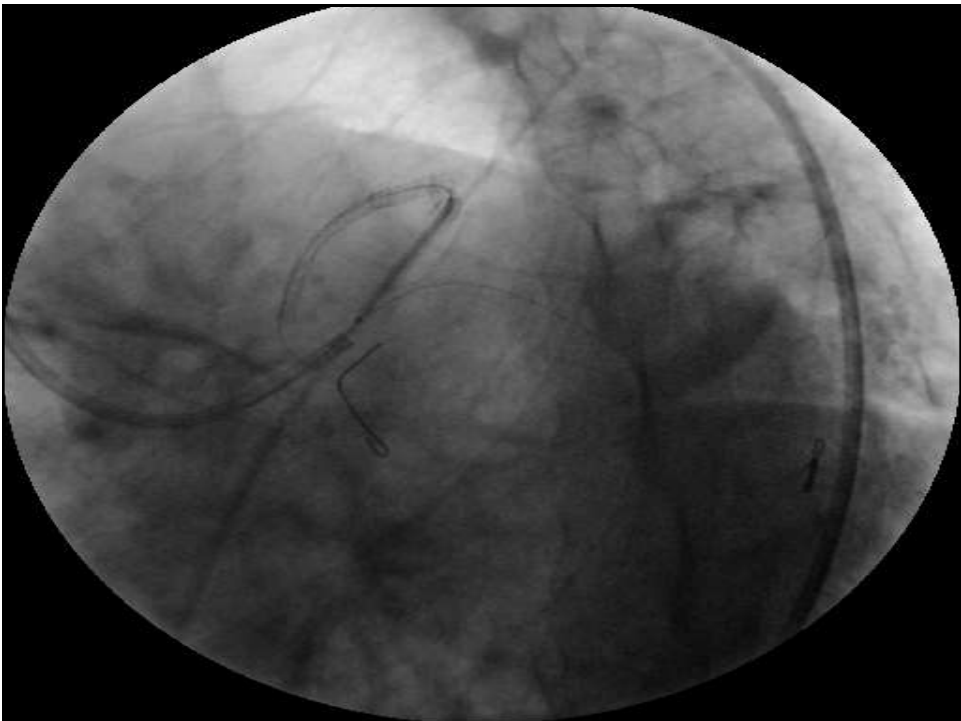
Coronary Angiography was decided

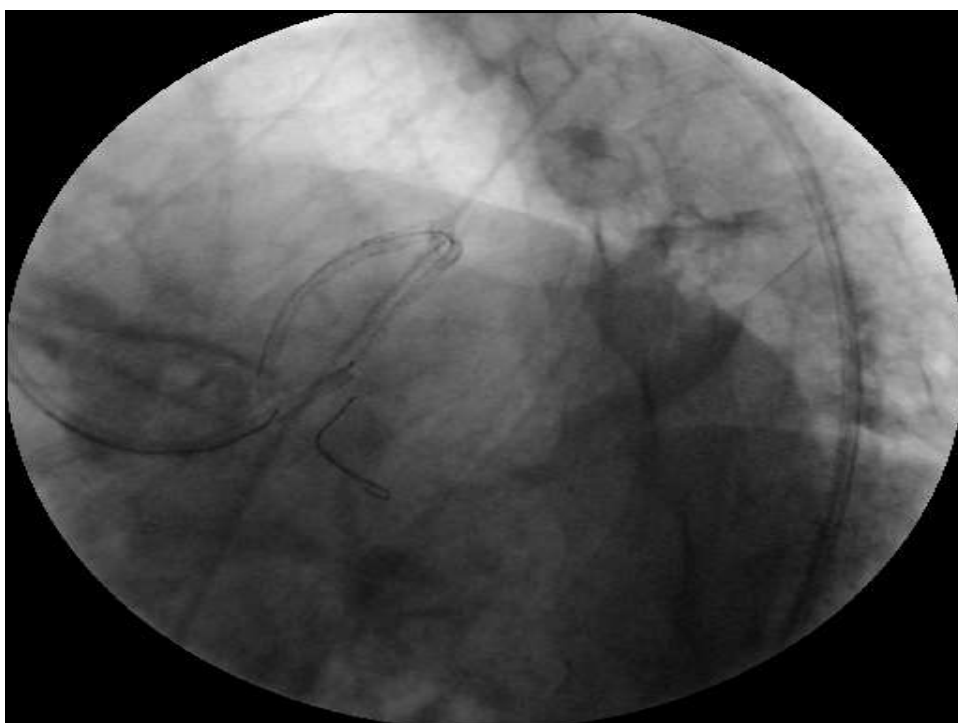
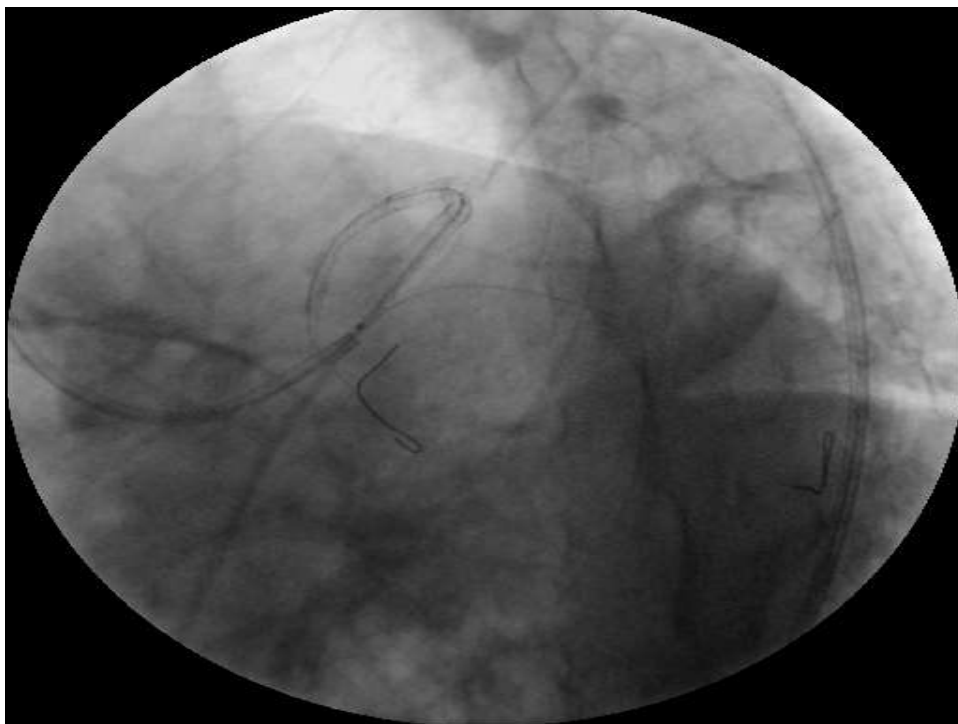


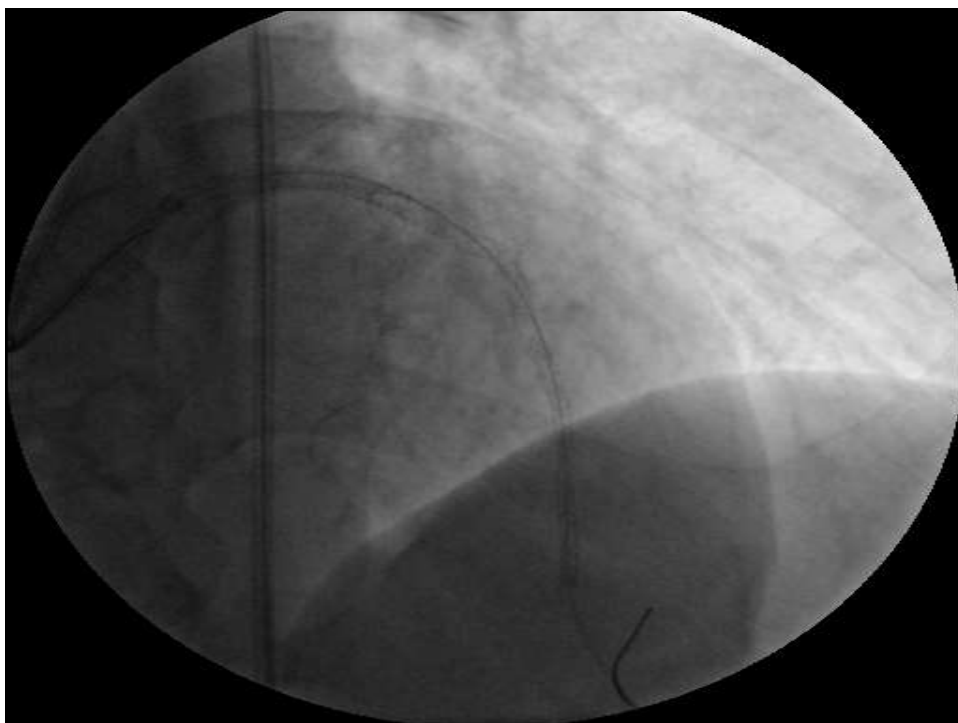
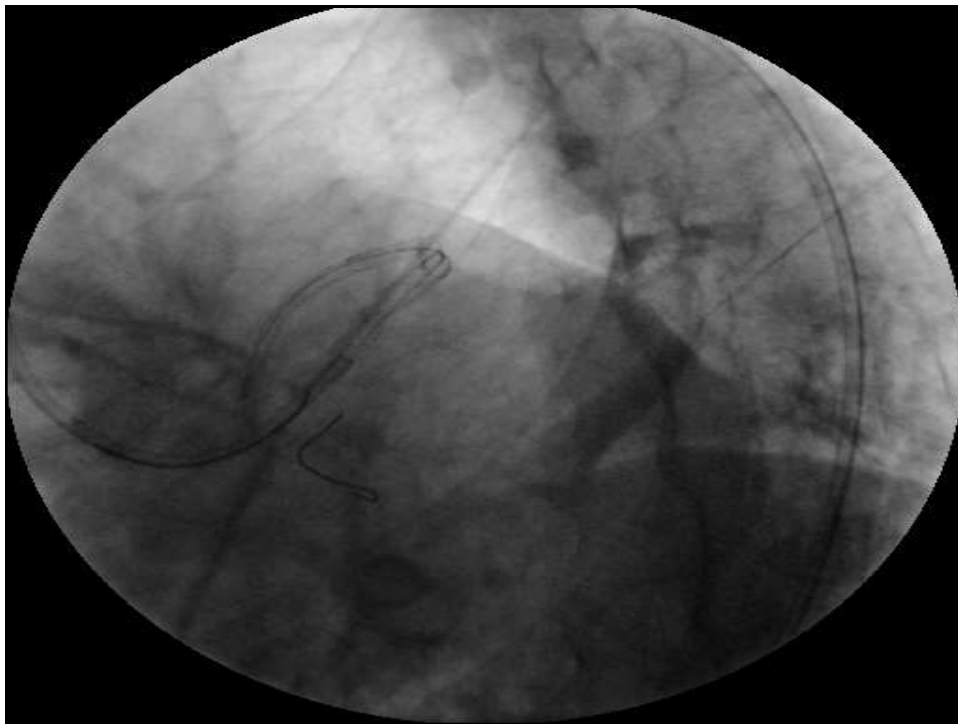


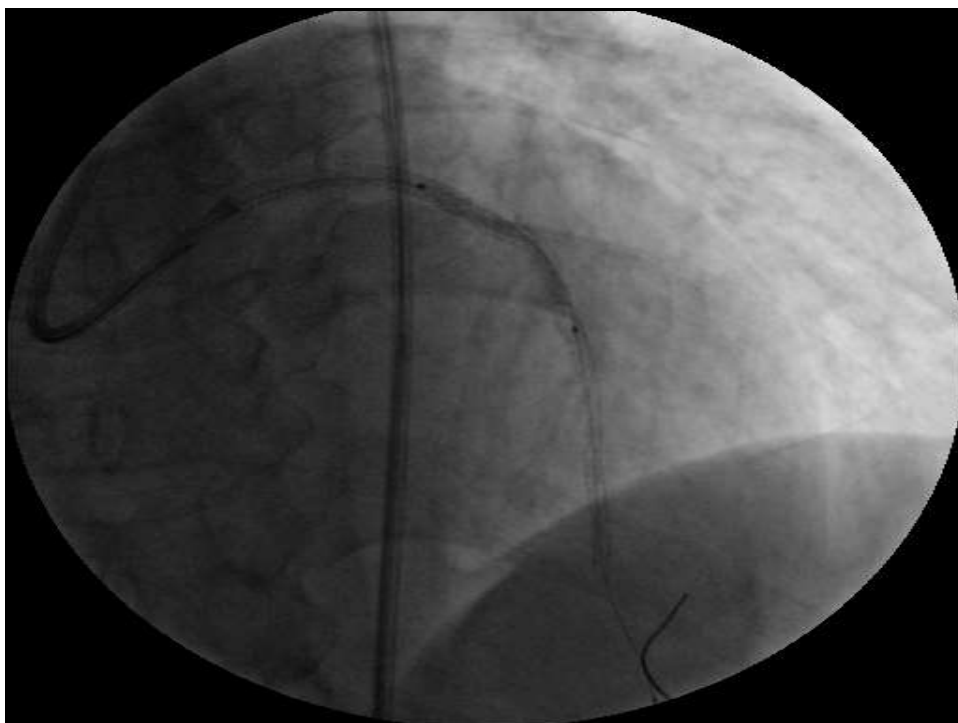
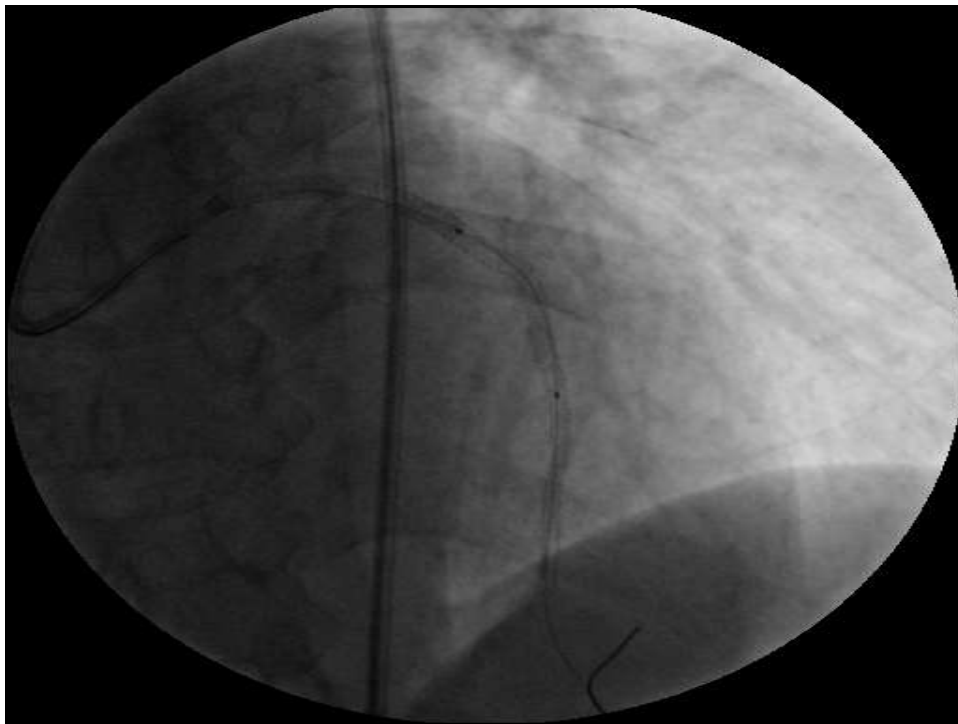


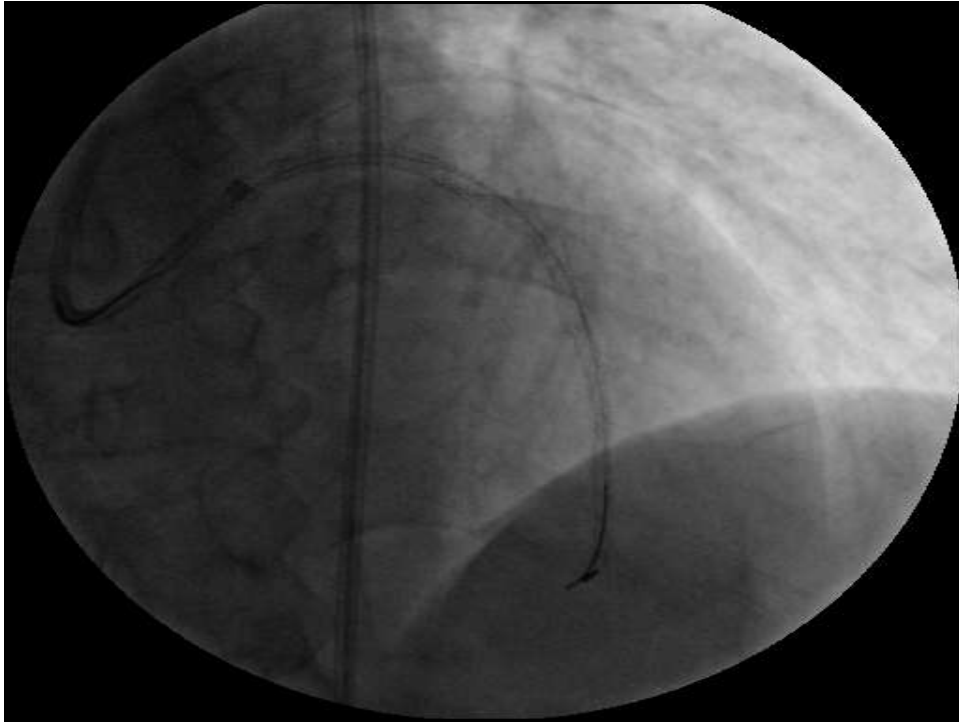












- ***THEN***

The patient passes free for more than twelve months with no chest pain

- ***BUT TWO WEEKS AGO***

The patient phoned me at night feeling of severe chest pain

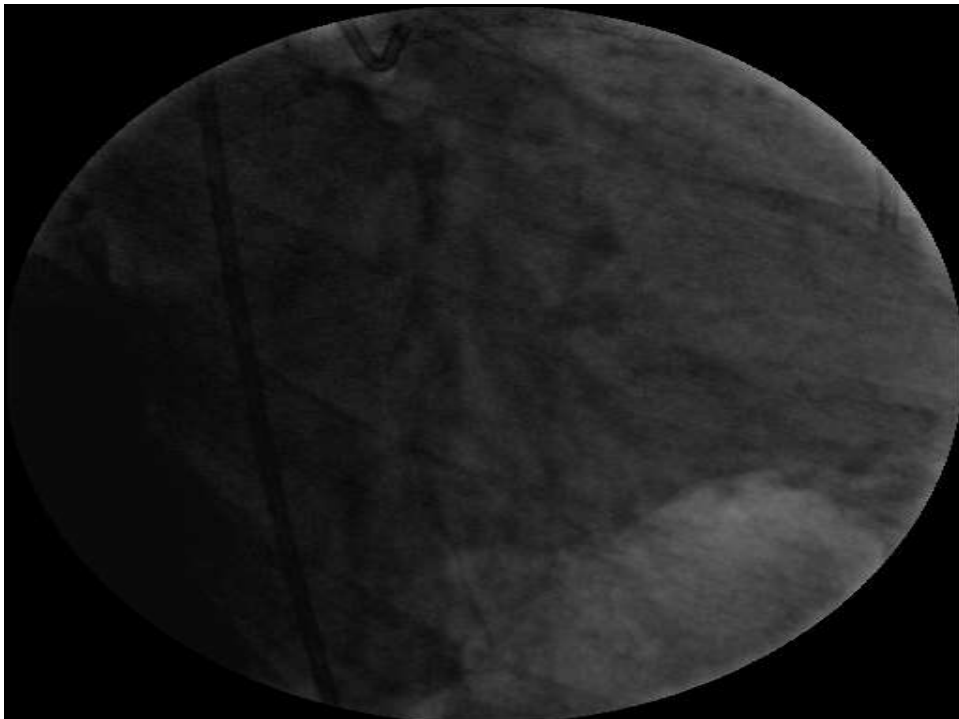
PLZ GO TO THE HOSPITAL;NOWWWWW

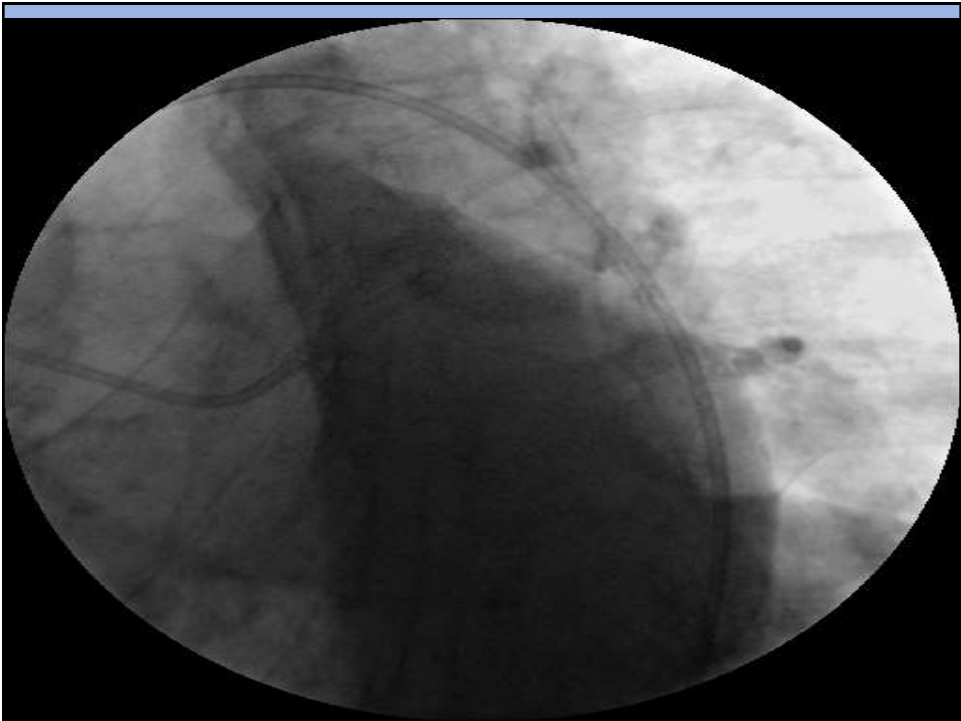
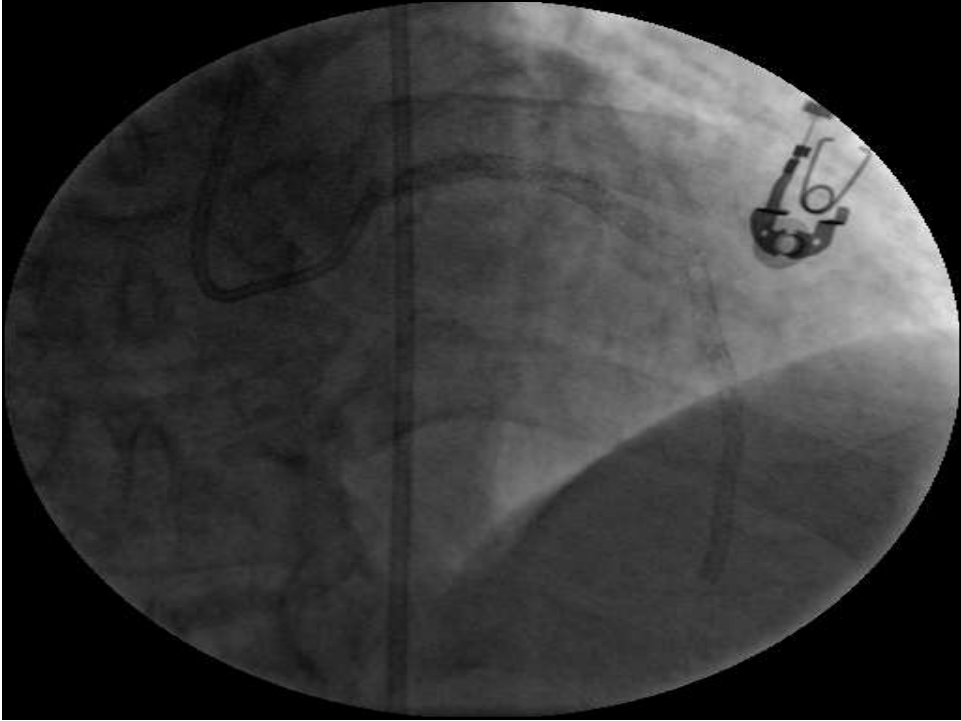
- **ECG** : ST rise in inferior leads
- **Bedside ECHO** :

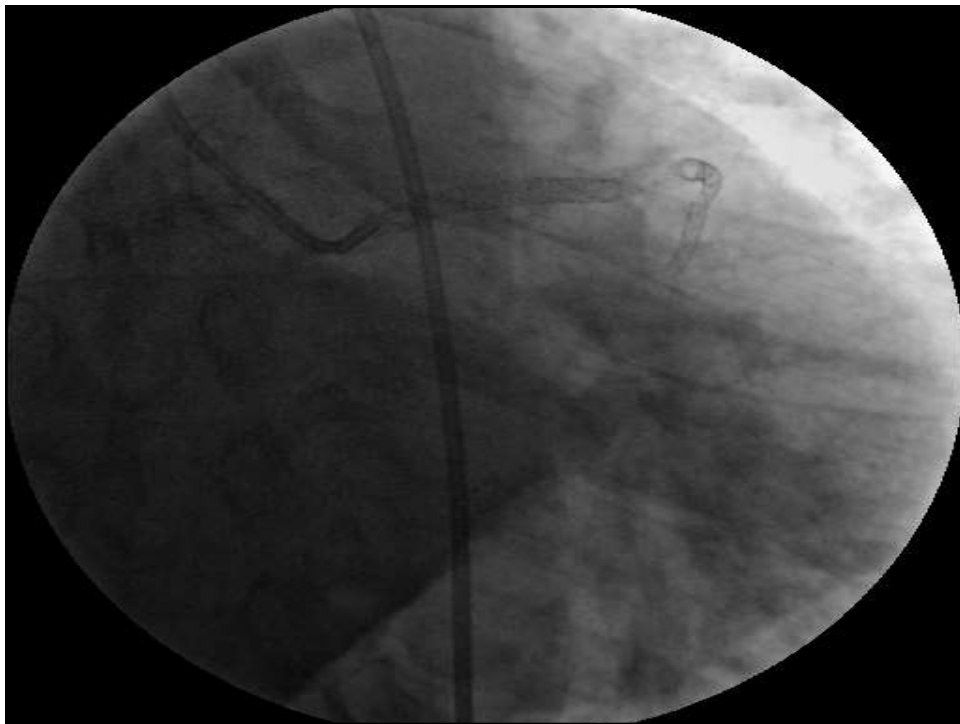
Severe inferior hypokinesia with preserved
systolic function

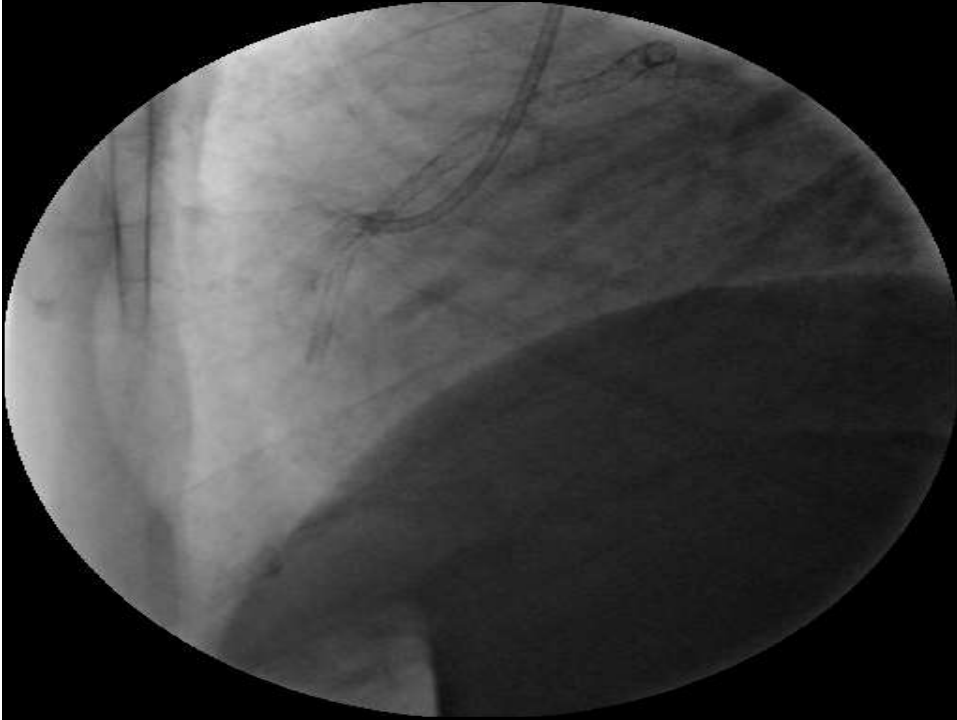
SO

coronoary angiography was decided



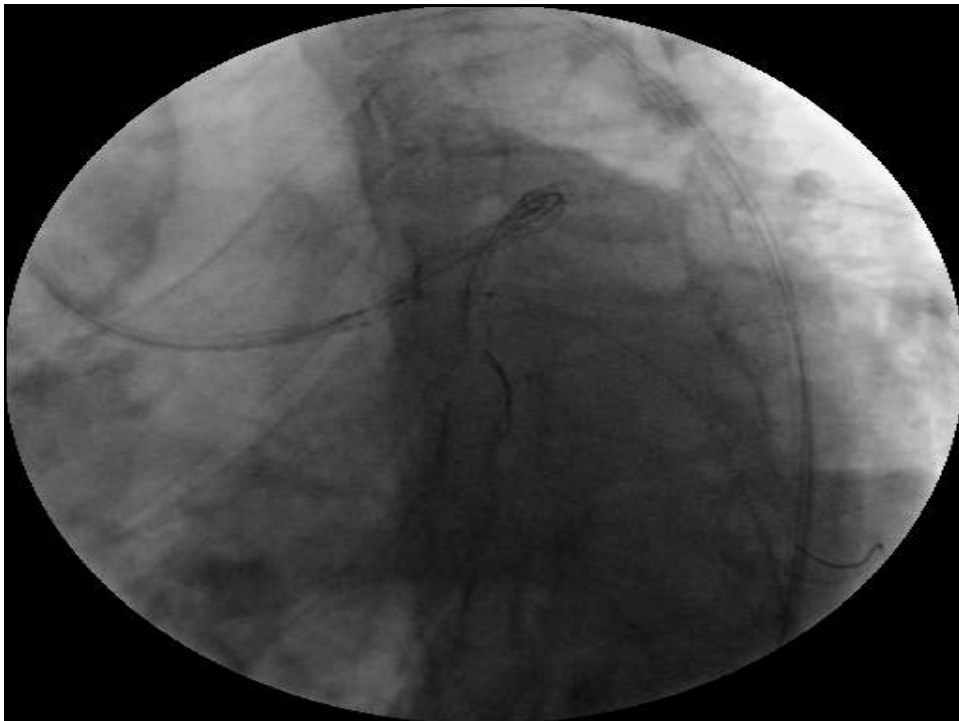
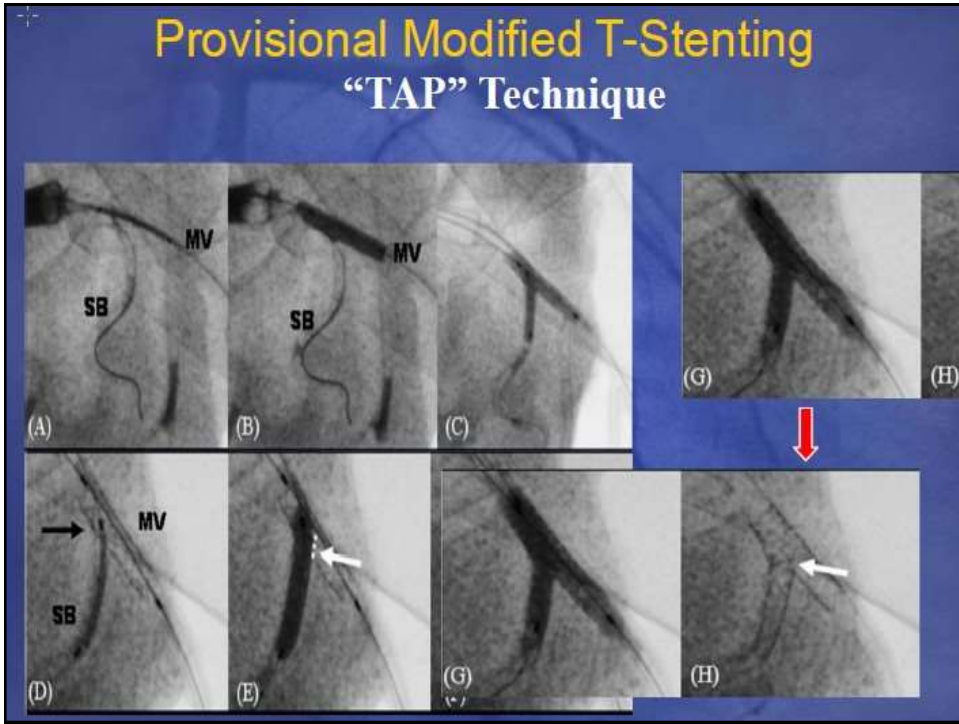


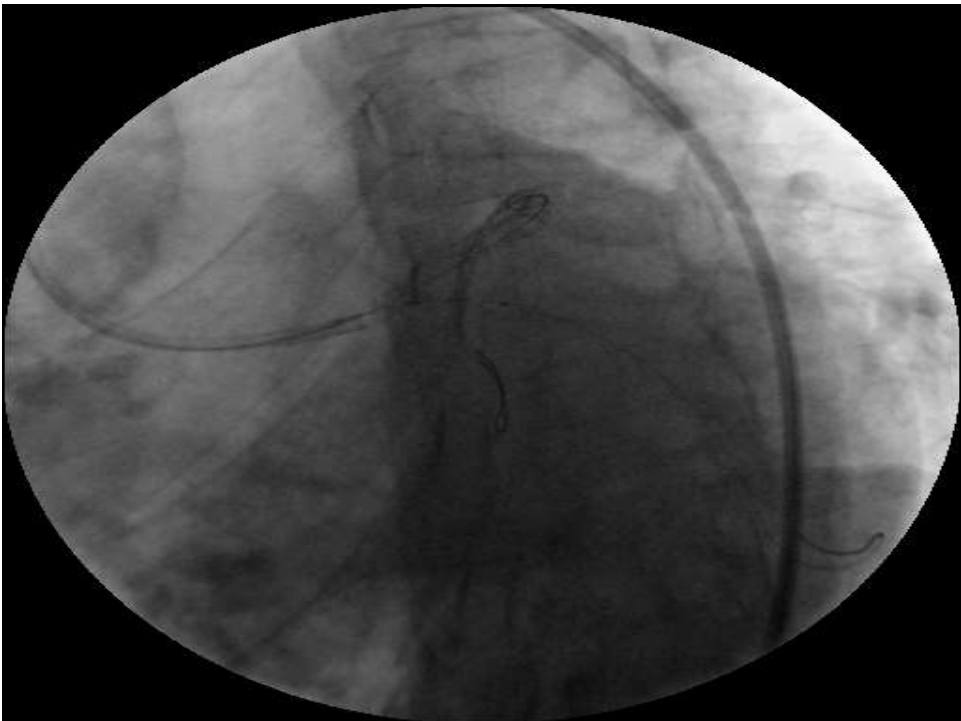
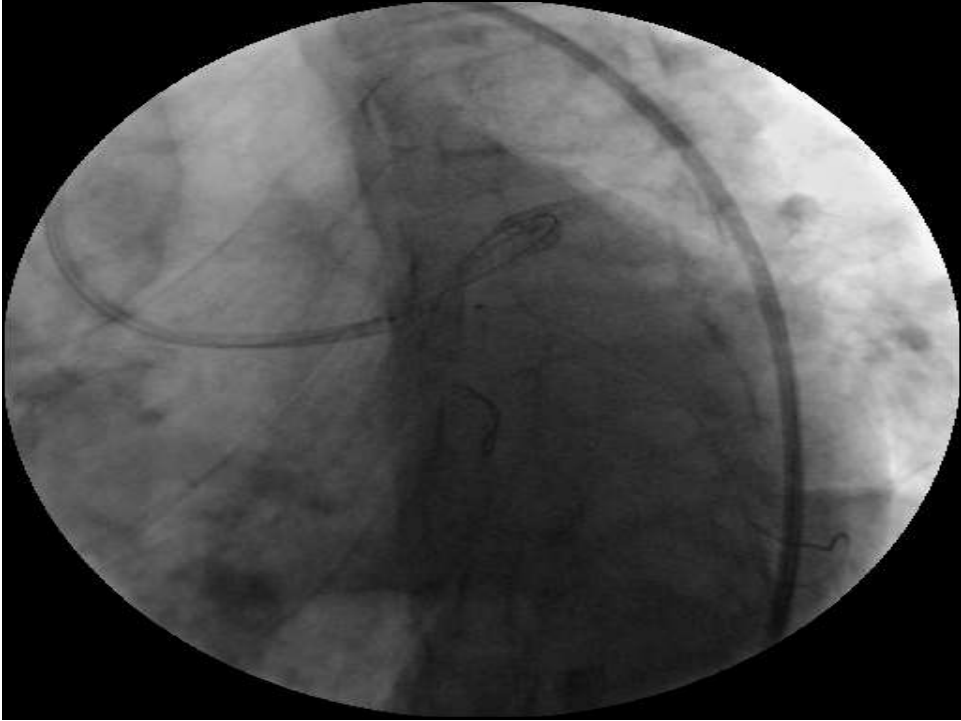


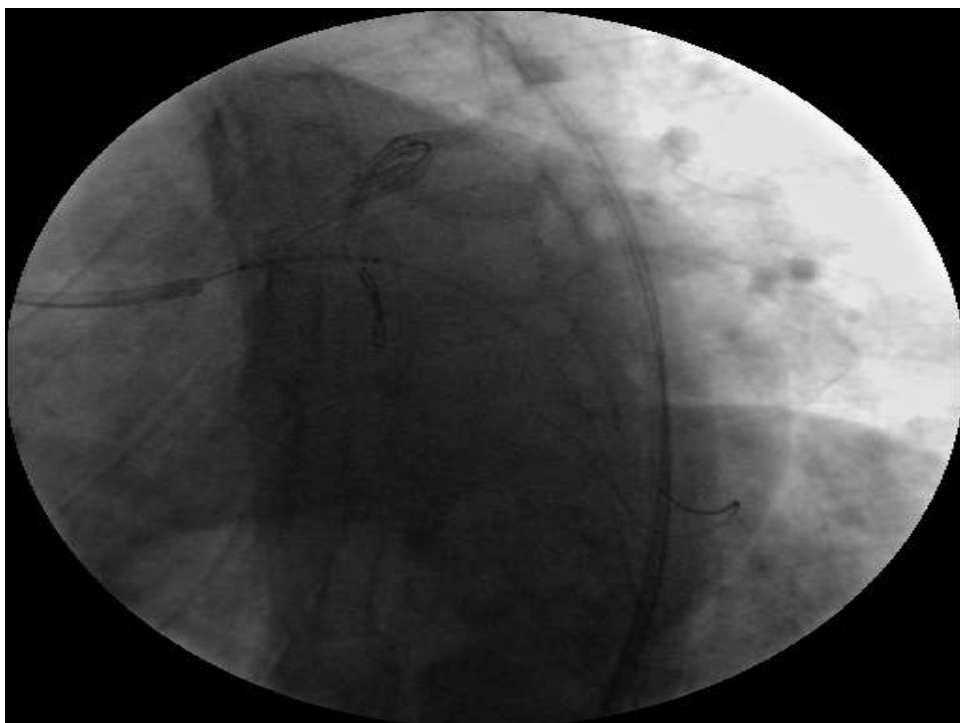
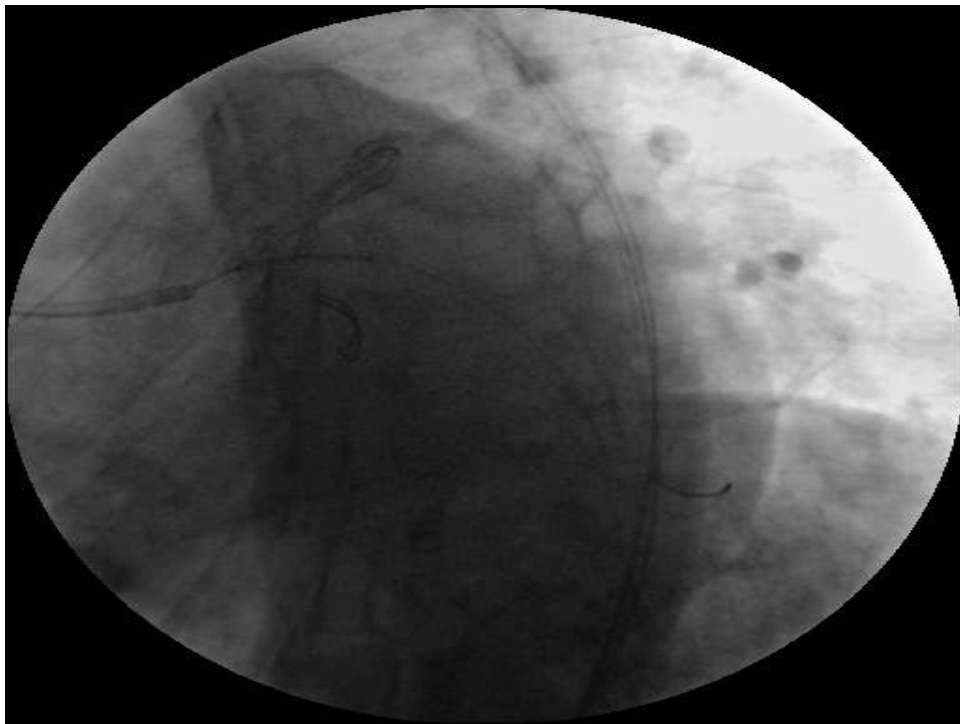


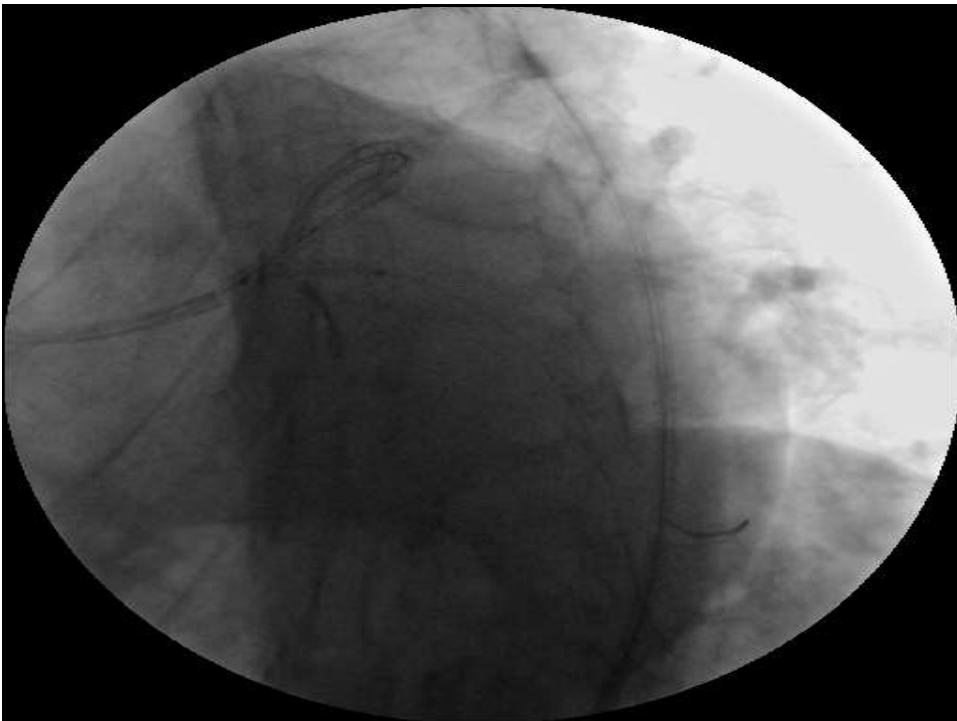
➤ *T and protrusion (TAP) technique :*

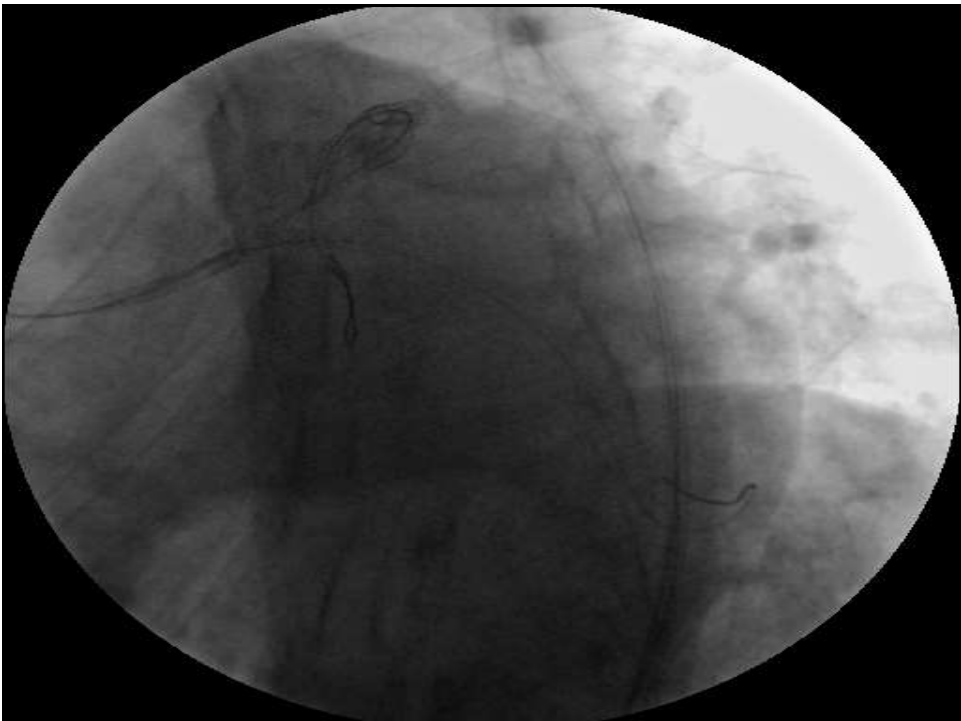
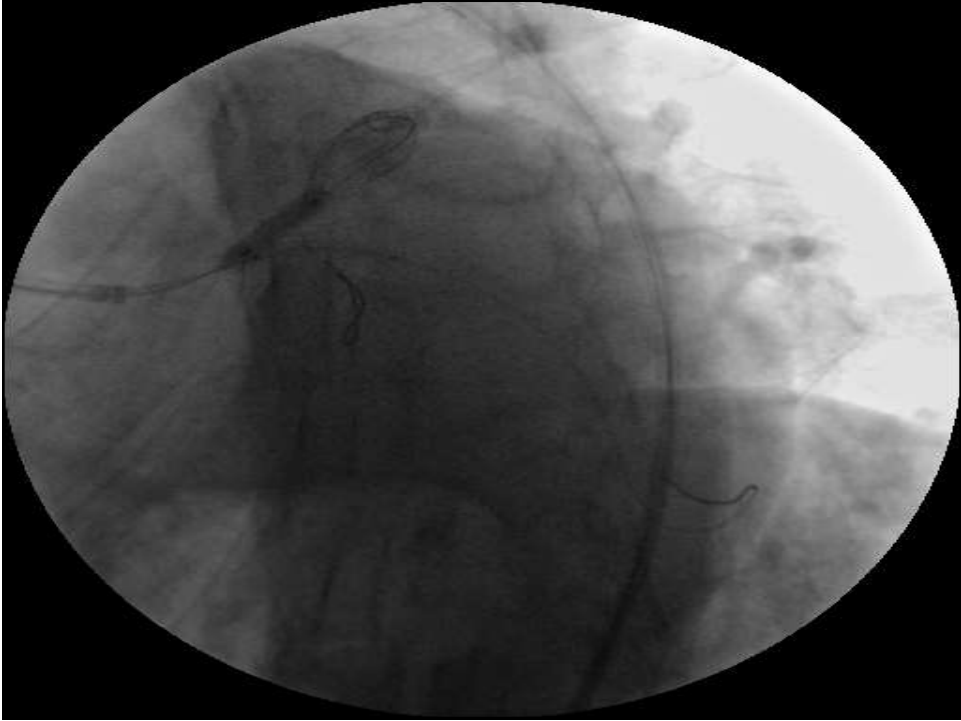
- Used in majority of the bifurcation lesions especially when the bifurcation angle is less than 90 degrees .
- Provide a good reconstruction of distal LM bifurcation with minimal stent overlap.
- Main vessel (LM-LAD) is stented.
- Then, a stent is placed at the ostium of the side branch (LCx) with a balloon left in the main stent.
- After positioning the proximal edge of the side branch stent 1–2 mm inside the main stent, the side branch stent is delivered at high pressure while a deflated balloon is left in the main stent.













Take Home Message

LM main stenting is still a land to intervention but keep mind that your tools are available

Take care that your patient is well educated to inform you about EVERYTHING

Thank You