

POST TAVI PCI

By

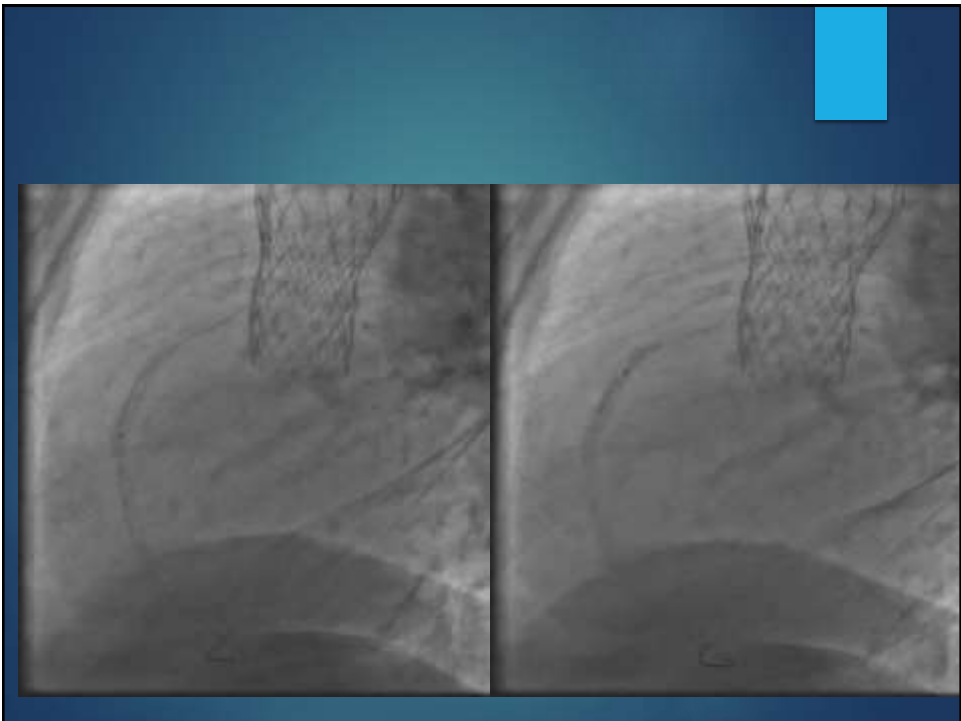
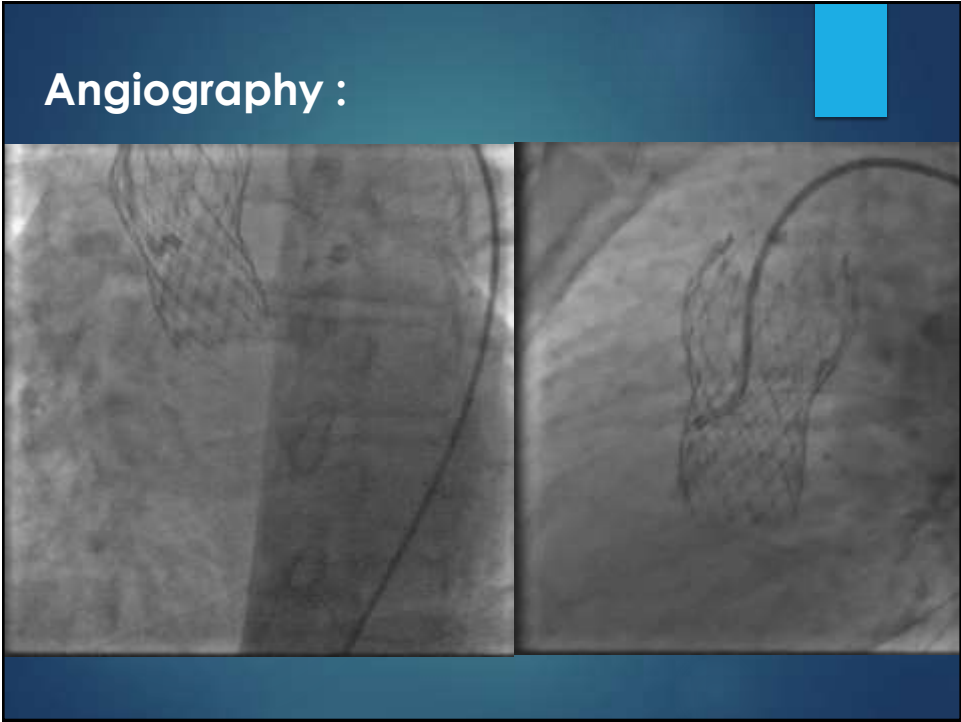
Prof. Ahmed Abdel-Aziz

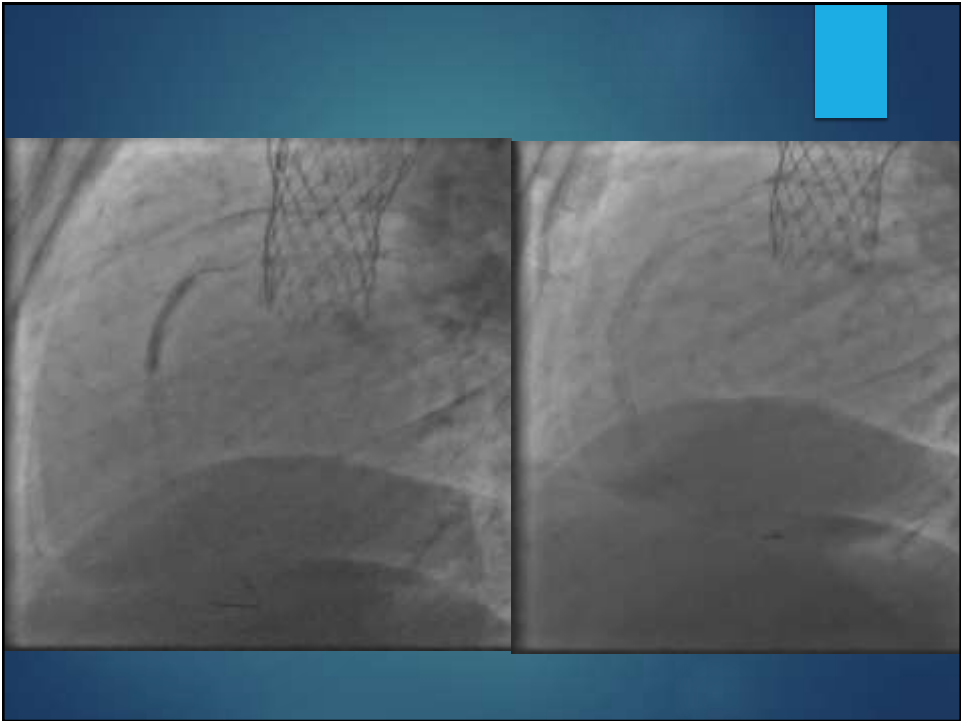
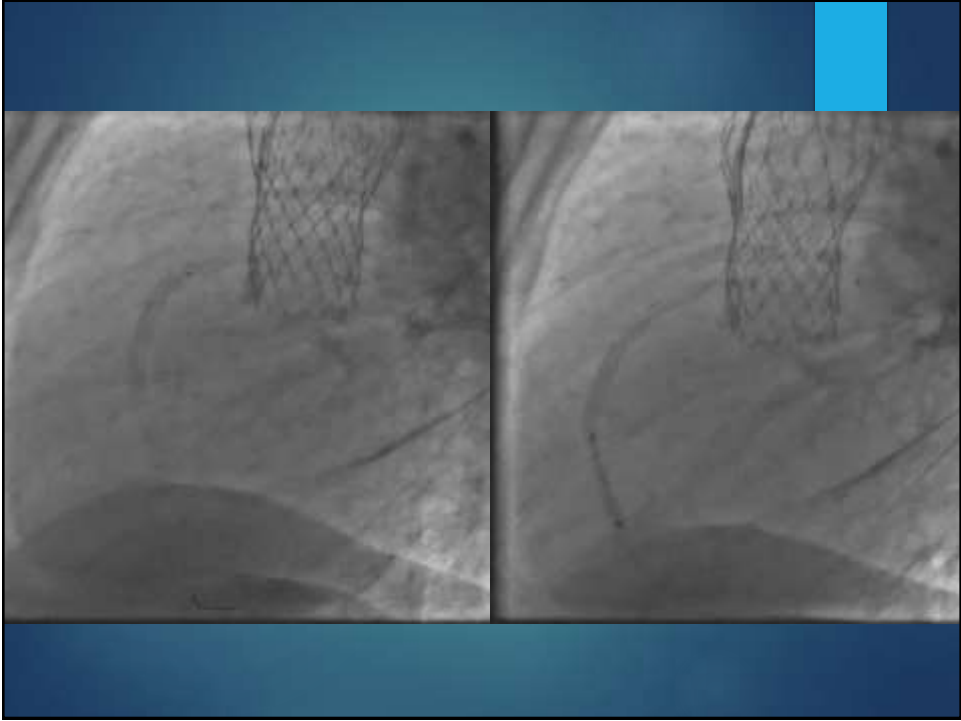
Critical care Medicine

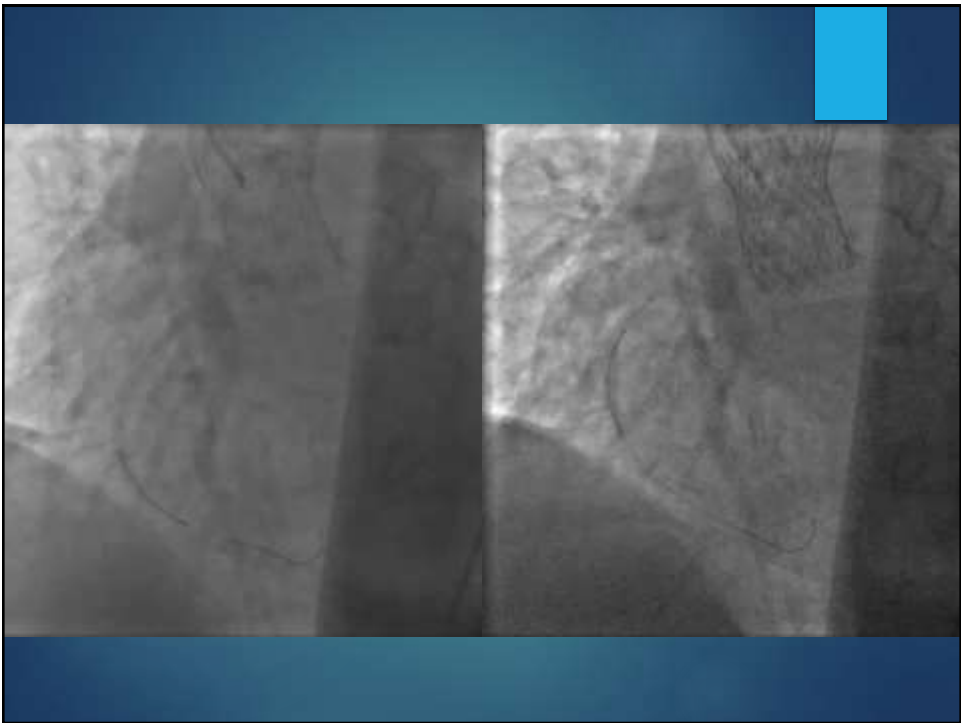
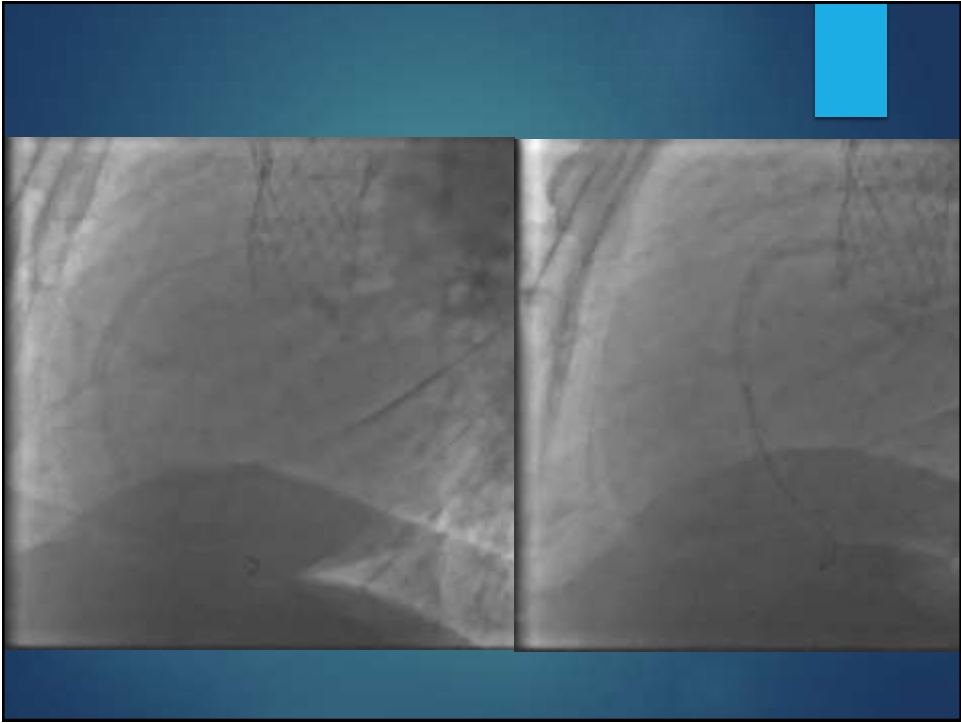
Cairo University

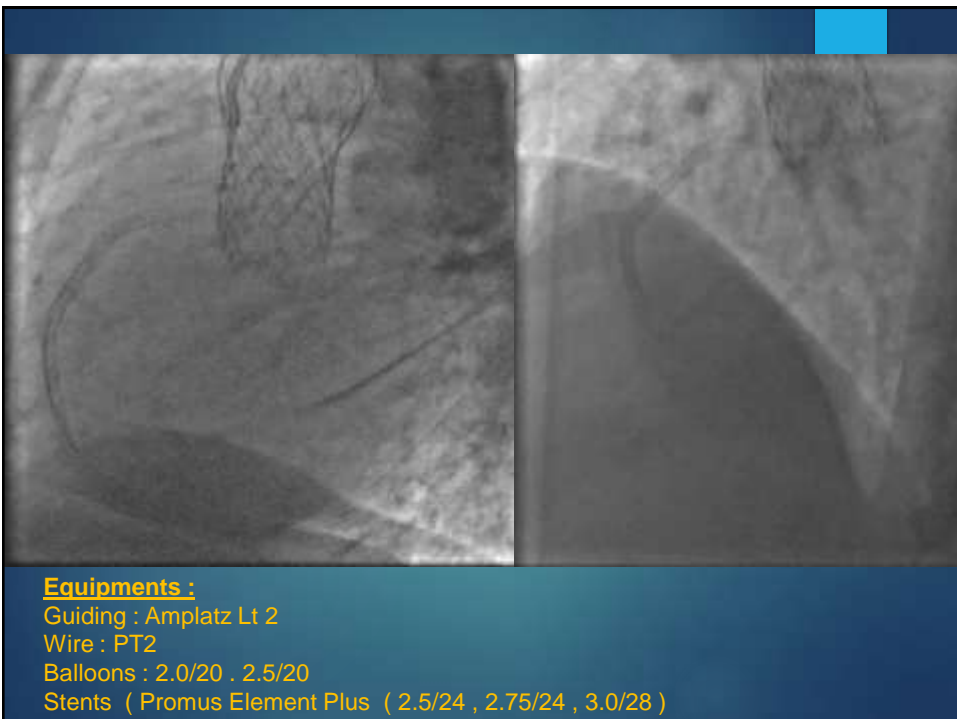
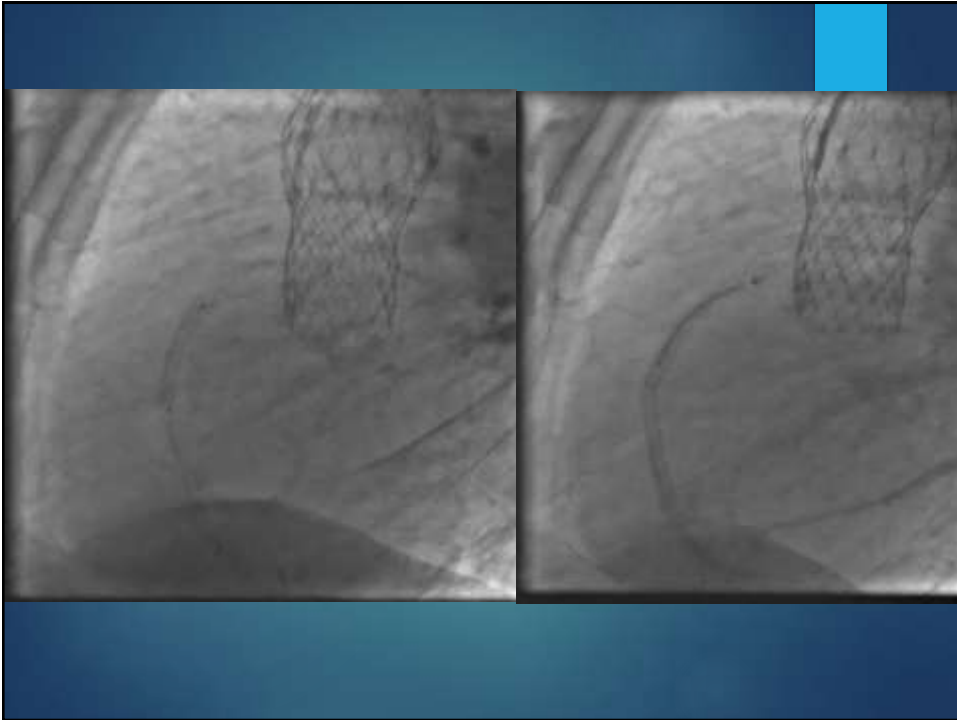
Personal History:

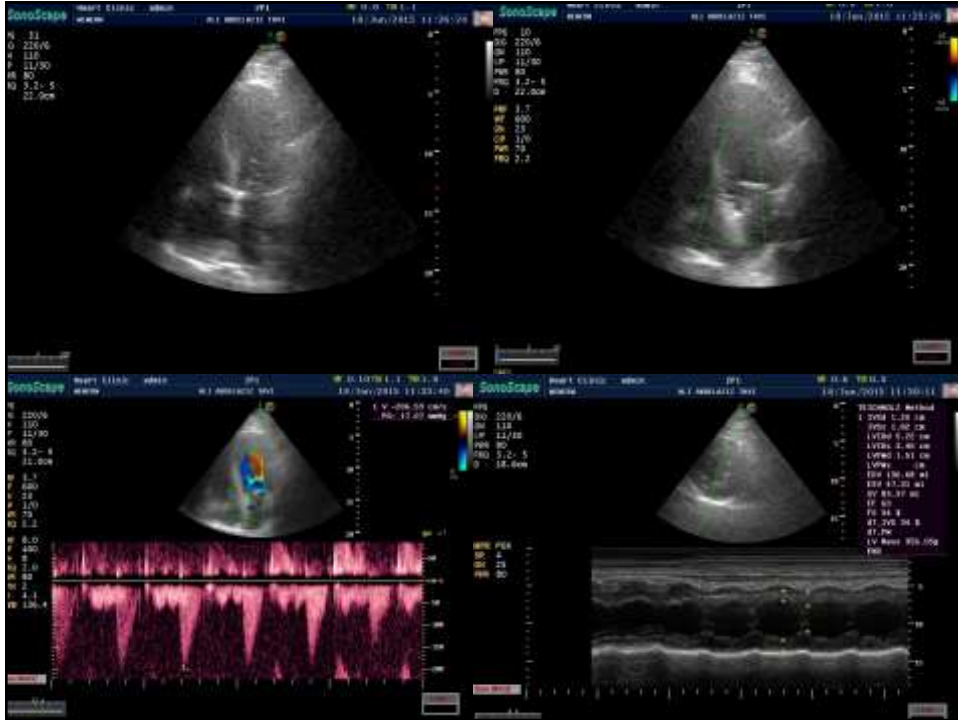
- ▶ 60 year / male.
- ▶ Risk factors:
 - DM / Type II.
 - HTN .
 - Smoker , obese
- ▶ TAVI 2014
- ▶ Failed PCI 2015







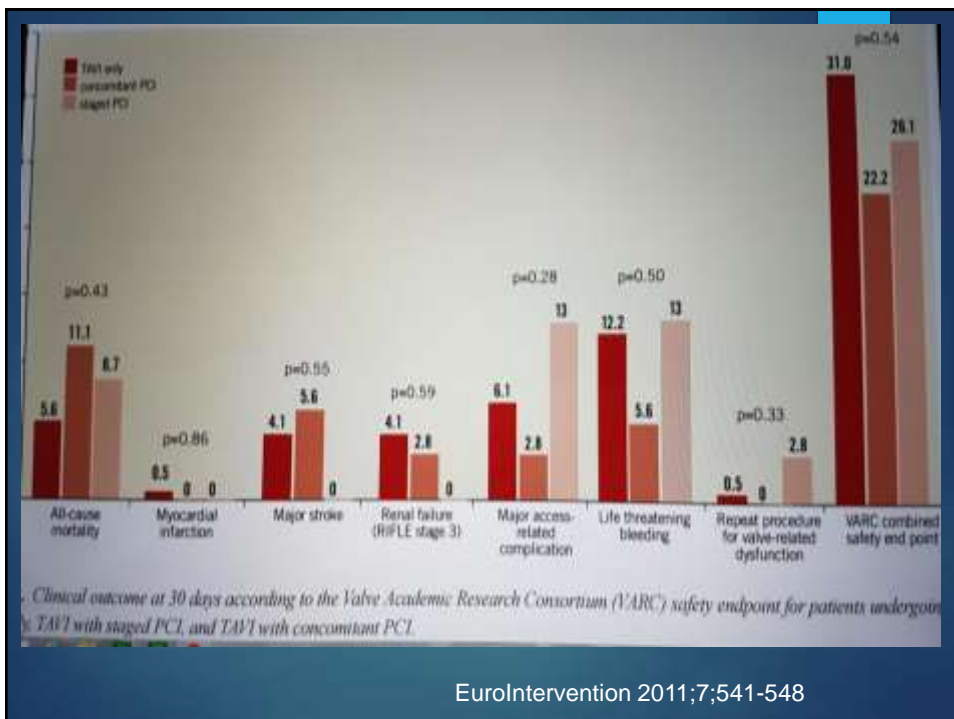
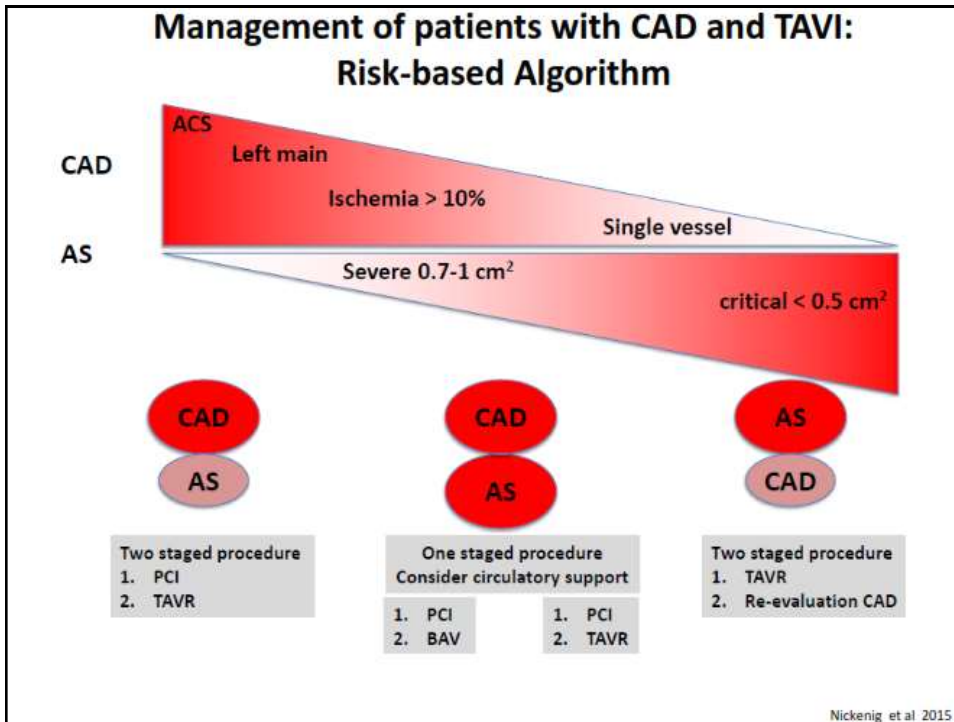




TIMING OF PCI

| PCI Prior to TAVI | | PCI Combined with TAVI | | PCI After TAVI | |
|---|---|--|--|--|---|
| Pro | Con | Pro | Con | Pro | Con |
| Simplified coronary access with no prosthetic valve in place | DAPT required after PCI may impact post-TAVI bleeding | Decreases the risk of mortality while waiting for TAVR | Increased dye load (contrast nephropathy), longer procedure time | Treating severe AS first may improve myocardial perfusion, decreasing need for PCI | Potential access issues, valve struts interfering with coronary cannulation |
| Less risk of hemodynamic instability and ischemia during TAVI | Risks of performing PCI in the presence of severe AS | Reduction of vascular complications by needing one access site | | | Catheter manipulation could move the valve |
| Minimize contrast load by giving it at 2 separate times | | Less risk of hemodynamic instability and ischemia during TAVI | | | Higher risk of hemodynamic instability and ischemia during TAVI |

Goellert et al. J Am Coll Cardiol 2013;62:1-10



Conclusion

- ▶ CAD is frequently associated with aortic stenosis in patients undergoing TAVI
- ▶ PCI are feasible in TAVI patients
- ▶ We don't know what is the best, Concomitant PCI or Staged PCI in TAVI patients

Thank you

